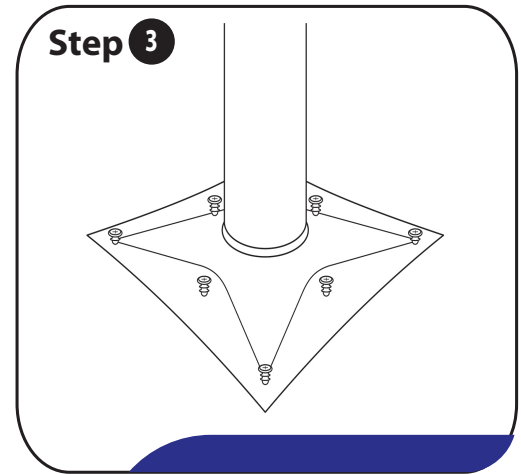
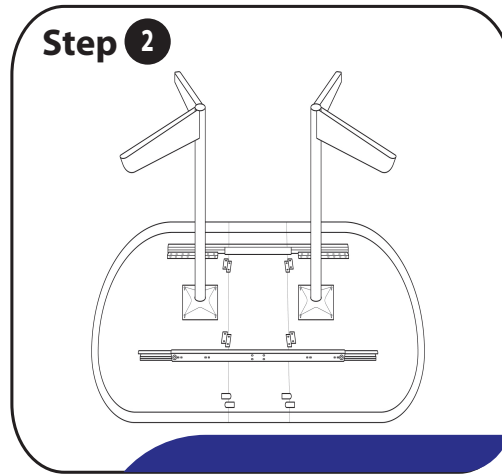
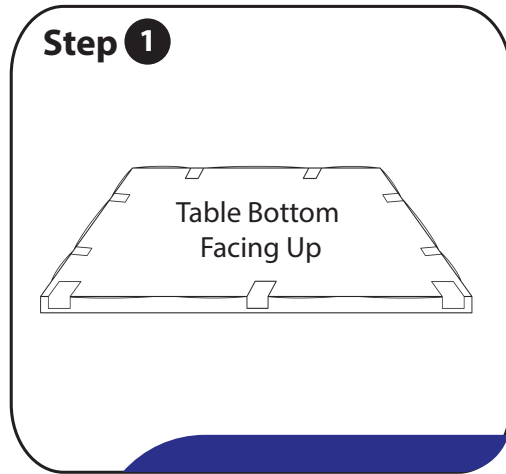


**IMPORTANT NOTE:**

**Dealer or installer:** Leave all documents to the consumer. **Consumer:** Keep this document with your proof of purchase for reference in order to prevent any damage to this product. We encourage hand assembly with philips screwdriver. If using a power tool, please set torque to lowest setting and increase torque as needed.

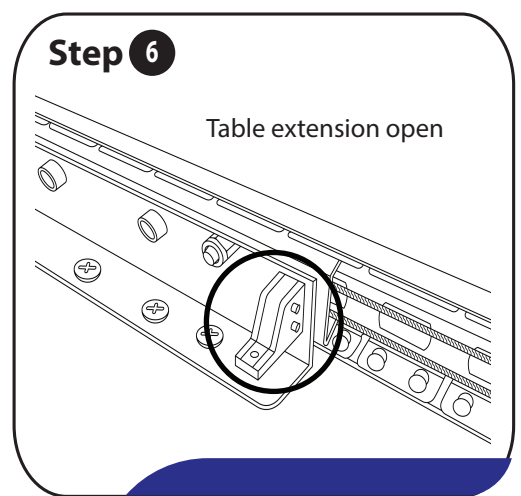
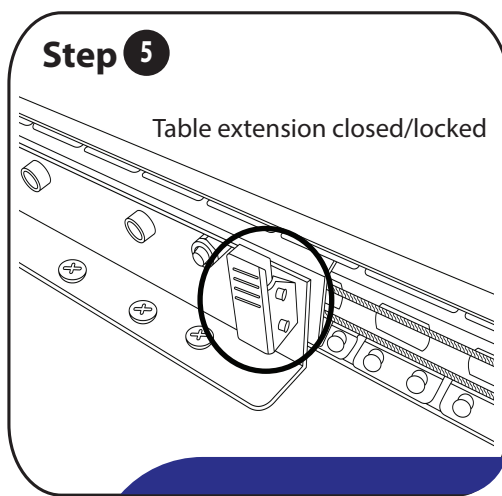
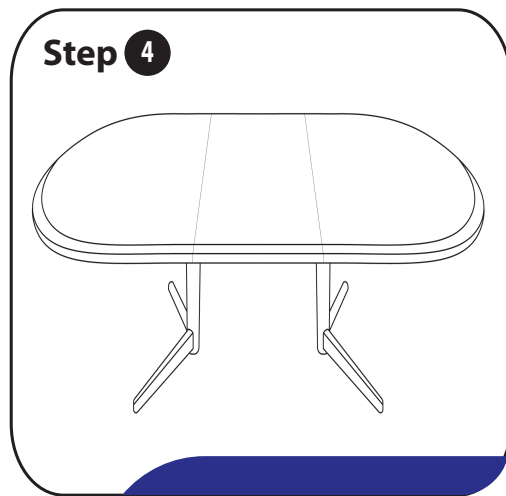
## Assembly Instructions



Step 1: Place the table top box on the floor with the tape facing up so when the box is opened the table top is facing down. This will ensure the table is in the box safely so the table top does not get scratched or damaged.

Step 2: Open the table base carton where you will find a hardware pack and 2 table bases. Place the table bases as shown in above image on the two ends of the table.

Step 3: Ensure the holes are lined up and use a screwdriver or electric gun to attach the screws. Set the torque to the lowest setting if using a power tool. NOTE: Carefully and slowly insert the screws to avoid stripping the holes.



Step 4: Ensure the table locks are closed and have not been touched. With the help of another person grab the two ends of the table, then lift and flip the table.

Step 5/6: For extension tables only: use the black knob to open (release) and close (lock) the table extension. Some tables might have a second lock mechanism (not shown).

# Product Care Instructions

No matter how tough these tables are, they are made from wood and laminate, and any table made from these materials can be scratched or burned or dented. When in use, we recommend using trivets, placemats, and tablecloths to protect the top from plates, hot pans, dishes, etc.

Darker finishes will show scratches more readily. This is not considered as a manufacturing defect.

Clean the table with a slightly damp sponge or cloth – use a mild dish soap if desired – then dry with a soft towel or cloth. Spills must be cleaned and dried up quickly to prevent laminate lifting. Never use abrasive cleaners or sponges.

Never let candle wax drip on the table – it will discolor the finish.

Be aware that humidity and climate will affect your wood furniture. Wood exchanges moisture with the air, expanding and contracting as humidity levels fluctuate. This movement can sometimes cause periodic gapping at the rule joints {the areas where leafs are inserted into the table top}. Such temporary gapping is a natural characteristic of tables with solid wood edges and is not considered a manufacturing defect. Caster Chair Company tables do not have aprons and leaf gap covers so for this reason the tables have larger gaps than conventional tables. Caster Chair Company will not replace as defective a table top that has a slight gap in the center, at the edges where two table halves or wood joints meet. This separation is normal.

Placing your table near heating vents, fireplaces, or wood stoves can damage your furniture because of the extreme changes in temperature and moisture.

Wood does have a tendency to darken and age over time – this will be especially noticeable on lighter finishes.

Avoid direct sunlight – ultraviolet rays will change the color of the wood over time. And if your table is in a sunny area, never leave an object on your table for an extended period of time – you could very well find that the area underneath the object is a different color than the rest of the table! We also recommend periodically putting your leaves into the table allowing them to age naturally to match the color of the rest of the table.

If the table needs to be moved it is recommended that two people lift the table to change its position. Do not drag the table as this will overtime damage the integrity of the table base/table top.

Always use a coaster under glasses, mugs, plates, etc. Hot, cold, or moist items will react with the wood surface and create discolored white rings or other marks. The laminate Caster Chair Company uses is not Formica Brand™ or Wilsonart™ so extra care must be taken to prevent table top staining.

Your new table is ready to use.

We hope that you enjoy your new dining table for years to come! Thank you for your purchase.

For assistance please contact us at +1 (855) 789-0501 or via email at [support@casterchaircompany.com](mailto:support@casterchaircompany.com)

[www.casterchaircompany.com](http://www.casterchaircompany.com)

